

HeatSeal™ H525

Effectively bridging the 'gap' between classic 'Office' use and those who demand much more of a Pouch Laminator!

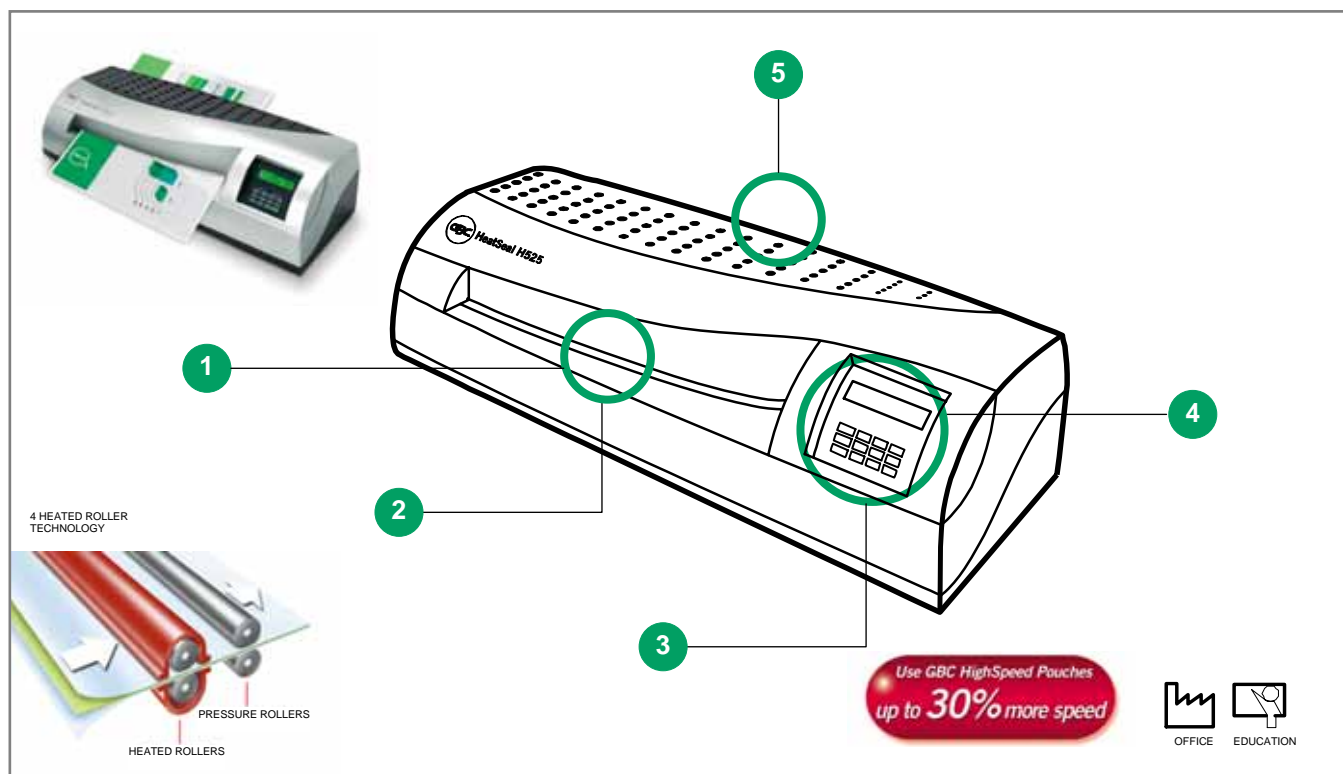
Variable speed & temperature via easily controllable and adjustable settings on the electronic display, the HeatSeal 525 produces excellent laminates of all thicknesses of Pouch up to 250 micron per side. At speeds of up to 530mm/min or approximately 135 A4's per hour or as many as 200 A4's per hour with GBC High Speed Pouches.

- Lamination width* from ID size to **A3 Max** (324 mm)
- **4 Roller design** (2 Heated + 2 'Pressure')
- Variable Temperature (up to 2 x 250 Mic. (**500 Total**)) + 'Cold' setting
- Variable Speed: 6 settings
- Auto switch off
- Digital display with 4 pre-set temperature & 6 speeds

* Lamination Width is the maximum insert width

Features & Benefits

- 1 Pouch thickness:** laminates up to 500 Micron (2 x 250 Micron per side)
- 2 'Ready Glow' light**
It glows red when correct operational temperature is reached.
- 3 Digital Display: Pre-set temperature settings and 6 speeds.**
Keeps users constantly in control of speed and temperature, the key factors of successful lamination.
- 4 Reverse mode:** Anti-jam function to solve any miss-feeding problems.
- 5 Large Exit Tray**
Keeps the laminated product straight on exit minimising curling and warping.
- 6 Only 3 to 5 minutes 'Warm up' period**
- 7 Pouch Counter**



Technical Specifications

Photo quality	Yes
Heat-up Time (75 mic)	3-5 min.
Speed mm/min.	260-530
Temperature control	Variable (Display)
Cold Lamination	Yes
Speed control	Variable/6 std settings
Rollers	4
Max. Document size	A3
Max. pouch thickness	2x250 Micron (500 Total)
Ready Lamp	-
Ready Glow	Yes
Release Function	Yes
Reverse	Yes
Display	-

Pouch counter	Yes
Auto switch off	Yes
Time to laminate 1 Standard A4 Pouch	34 sec.
A4 Laminates / hr*	105
Time to laminate 1 High Speed Pouch	24.5 sec
High Speed Pouches Laminates / hr*	Yes
Warranty	2 years
Dimensions	527x280x159
Certification	GS / TÜV / CE
Weight	9.86 kg
Power Consumption Watts / Amps	1100W/4.7A

Product Codes:

EU 1702700
UK 1702730
CH 1702710



www.gbceurope.com

GBC reserves the right to modify specifications without notice.

* Estimates only